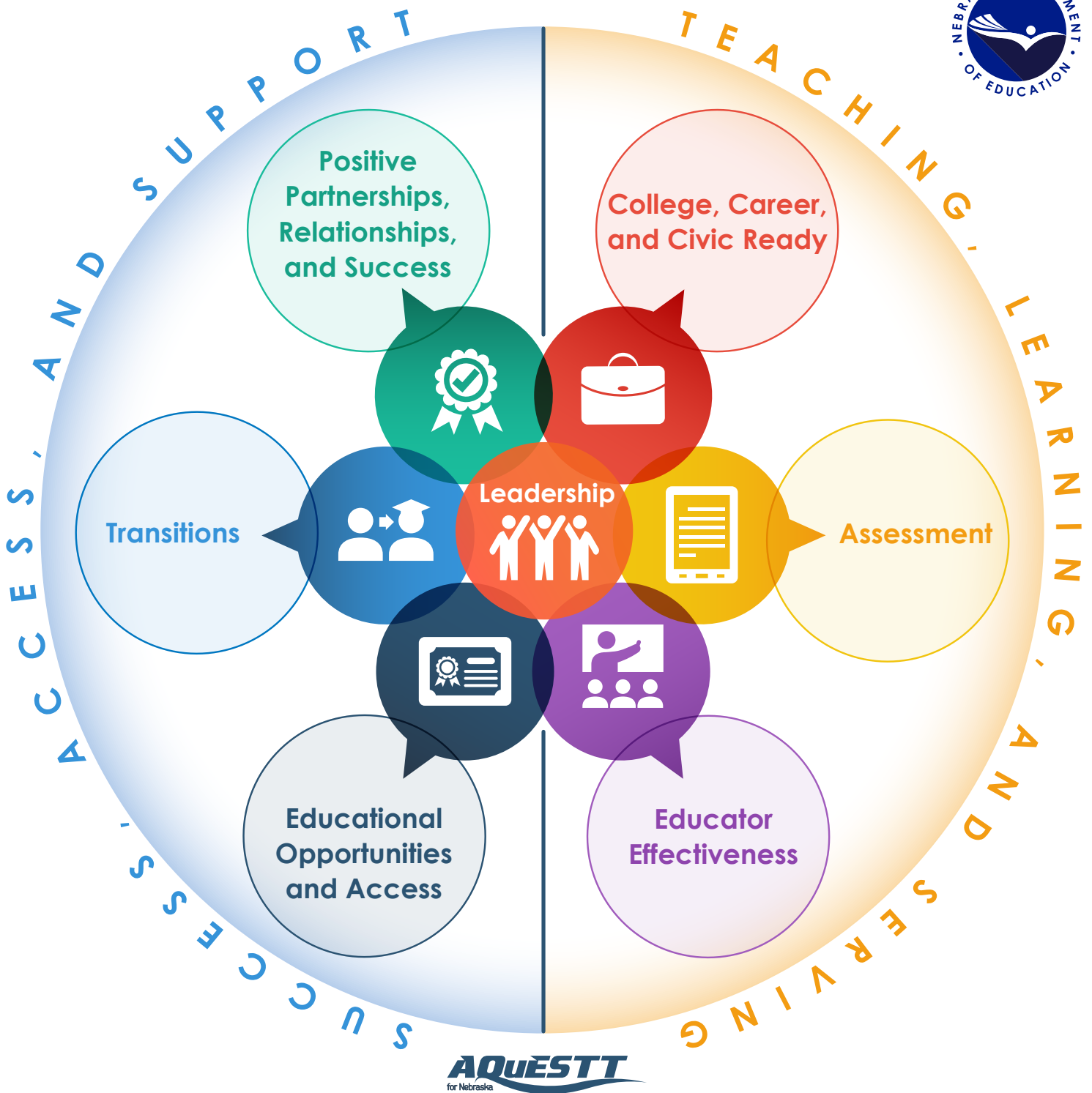


The AQuESTT Framework



Great things happen when we work together.
Visit www.aquestt.com to find out more.

SUCCESS, ACCESS, AND SUPPORT



Positive Partnerships, Relationships, and Success

The State Board believes that student engagement through positive partnerships and relationships is fundamental to successful schools and districts. The State Board seeks to support schools and districts to implement best practices in student, family and community engagement to enhance educational experiences and opportunities.

Areas of Focus

- Individualized or Personalized Learning Plans
- Attendance and Participation
- Family Engagement
- Community and support services



Transitions

The State Board believes that quality educational opportunities focus on supports for students transitioning between grade levels, programs, schools, districts and ultimately college and careers.

Areas of Focus

- Early Childhood-Elementary
- Elementary-Middle School
- Middle School-High School
- High School-Post High School



Educational Opportunities and Access

The State Board believes that all students should have access to comprehensive instructional opportunities to be prepared for postsecondary education and career goals.

Areas of Focus

- Early Childhood Education
- Comprehensive Learning Opportunities
- Expanded Learning Opportunities
- Blended Learning Opportunities

TEACHING, LEARNING, AND SERVING



College, Career, and Civic Ready

The State Board of Education believes that every student upon completion of secondary education shall be prepared for postsecondary educational opportunities and to pursue his or her career goals.

Areas of Focus

- Rigorous College & Career Ready Standards for All Content Areas
- Technological & Digital Readiness
- Support for Career Awareness and Career/College Goals



Assessment

The State Board believes the results of multiple assessment sources (national, state, and classroom-based) should be used to measure student achievement of college and career ready standards, and be used as an integral part of the instructional process.

Areas of Focus

- Individualized/Adaptive Assessments
- Classroom Based Assessments
- State Assessments
- National/International Assessments



Educator Effectiveness

The State Board believes that students should be surrounded by effective educators throughout their learning experiences such that schools and districts develop effective teachers and leaders who establish a culture of success.

Areas of Focus

- Nebraska Teacher & Principal Performance Framework
- Professional Development
- Building Leadership Supports
- Effective Local Policy Makers & Superintendents